

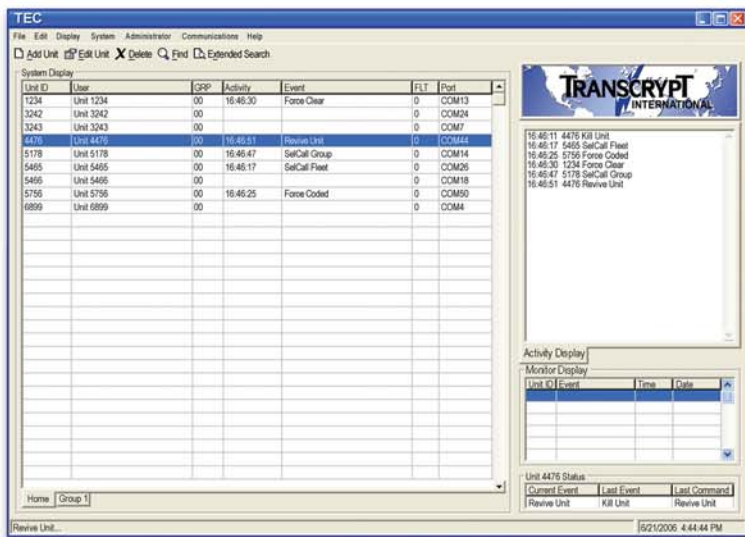
# RADIO MANAGEMENT SOFTWARE



# TRANSCRIPT<sup>®</sup> INTERNATIONAL

# TEC

## TACTICAL ENCRYPTION CONTROLLER



Transcript's user-friendly Tactical Encryption Controller (TEC) software is an effective monitoring solution for both large and small radio systems, allowing users to efficiently manage an entire fleet of radios.

The software works with any radio fleet equipped with Transcript scramblers or ANI modules, and operates from a standard personal computer. TEC works in conjunction with Transcript's TR30-306X-series modems.

### Preventing Breaches With Mark to Kill

The Mark to Kill function provides a second line of defense for protecting a radio system from intruders after a unit has been lost in the field. Simply right click on a radio's unit ID and select Mark to Kill; TEC will then continue to monitor radio traffic and will automatically kill the radio, if required.

### Securing Radios Via OTAR

TEC serves as a simple-to-use interface for performing a variety of secure OTAR commands. No programming knowledge is required — users can change scramble codes, issue SelCall commands, force and release clear and coded mode, force code space, and kill and revive radios with just the click of a mouse.

### Monitoring and Tracking Multiple Ports

TEC can connect up to 50 radio groups simultaneously, giving users the flexibility to monitor different frequencies or groups. Users with multiple base stations can also use TEC to determine general radio locations. In addition, TEC's port tracking feature ensures that TEC-issued commands will always be sent to the radio's last used channel or frequency, rather than the originally assigned channel.

### Logging Radio Events

During operation, TEC continuously monitors all system activity and keeps a time and date record log of all inbound and outbound events, such as transmissions, OTAR commands and radio acknowledgements. Users have the flexibility of setting the log file duration by month, week, day or number of transmissions; TEC then automatically starts a new log file and saves it to the user-determined location.

### Customizing Fleet Management

With easy-to-access pop-up menus, TEC provides a comprehensive interface for viewing a radio security fleet. TEC features multiple fleet displays and gives users the ability to sort information by ID, user name, radio group, fleet, activity, event or channel.

### Enhancing System Security

Additional set-up options allow for custom audio or visual alarms that alert users of emergencies, potential security risks from unknown users, and marked units.

### Troubleshooting Features

The terminal window feature enables users to view raw port traffic for troubleshooting and to issue modem commands — such as changing unit and group IDs, setting miscellaneous bits, and adjusting delays — without going through the port setup.

### Marking Units

TEC allows users to mark selected units that may require extra attention, and shows that unit and its activities in its own display.

# TEC

BY TRANSCRIPT

# RADIO MANAGEMENT SOFTWARE

# TRANSCRIPT<sup>®</sup> INTERNATIONAL

# TEC

## TEC SPECIFICATIONS

### MINIMUM SYSTEM REQUIREMENTS

Fleet radios equipped with Transcript signaling or encryption modules  
One or more Transcript TR30-306X series modem(s) and DB9 serial cable(s)

One fleet radio without scrambler installed for each Transcript modem (acts as a base radio)

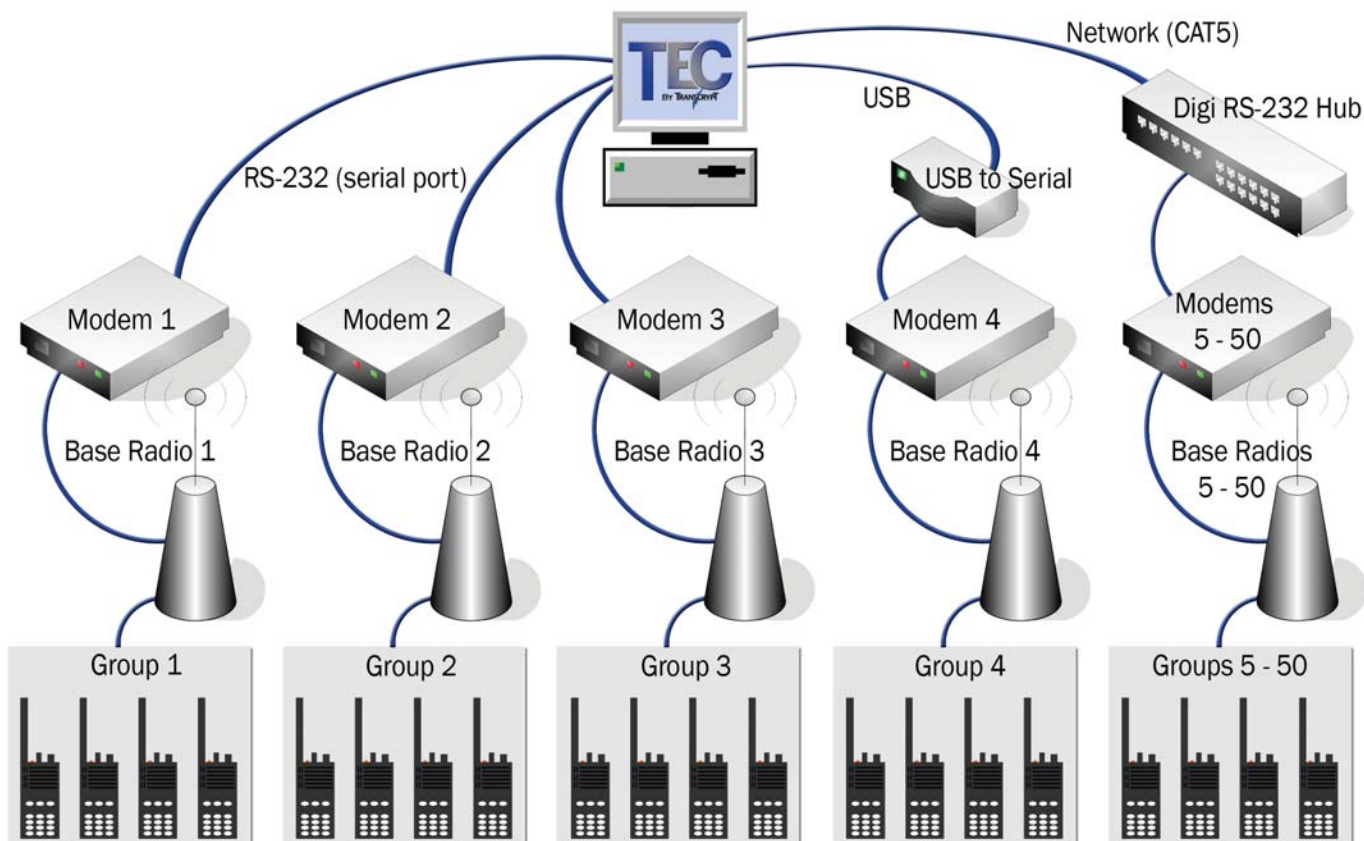
CH12-60XX-style radio interface cable, DB15 to radio connector



### PERSONAL COMPUTER REQUIREMENTS

Windows™ XP operating system  
Intel-compatible processor, 800 MHz or faster  
128 MB of system RAM  
Serial communication port (s)  
CD-ROM drive

## TEC APPLICATIONS



Note: Additional equipment beyond the minimum system requirements listed above are needed for the USB to Serial and RS-232 Hub configurations.